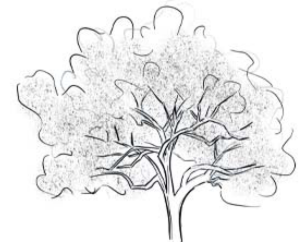




Gardens of Oak Hollow

A SMALL COMMUNITY WITH A BIG HEART

Neighborly News



Number 082

12 March 2024

HOA General Meeting



**6PM, Tuesday, March 26
Brook Hollow Library**

The meeting will be available only from 6 to 7:30 PM, with no early admission into the room. Plan on arriving at 6PM as possible.

Paper Ballots

The paper ballots have been delivered to each home in our Community. Completed ballots are to be submitted and counted at the meeting. If you know you will be unable to attend the General Meeting, be sure to submit your ballot to your Block Captain or to Zane Chalfant before the meeting so it can be counted.

Two Additional Items

In addition to voting for the new HOA Executive Board, remember that there are two additional items at the bottom of the ballot that also need your vote.

HOA Board Meeting Minutes

The Minutes from the last HOA Board Meeting, March 4, are on Website.

Casting Off Cast Iron



A common plants around our Community is the cast iron plant (*Aspidistra elatior*). Did you ever wonder how it got that name?

Here is some insight from Dr. Lew Feldman, the Executive Director at the Botanical Garden at Berkley.

Gas Lighting

Aspidistra elatior (the cast iron plant) was a popular houseplant in Victorian England and was often considered a “symbol of middle-class respectability.”

After gas lighting was introduced to illuminate homes in the late 19th century, *Aspidistra* was often the only plant that could be grown successfully indoors, leading to the descriptor, “cast-iron” plant, meaning that it was very hardy. But what’s the basis for this hardiness?

When the gas used for illumination was chemically analyzed it was found to have a contaminant, a low molecular weight compound known as **ethylene**. We know that ethylene occurs naturally in plants where it functions as a growth regulator,

promoting various types of developmental events. When present in high amounts, as in illumination gas, ethylene is toxic.

Given this toxicity why does the Aspidistra appear unaffected, while most other plants die? The answer is, that the Aspidistra hardly “sees” the ethylene; that is, that the usual biochemistry found in most plants for reacting to ethylene is absent or greatly modified in Aspidistra. Hence, Aspidistra plants can grow successfully in rooms with relatively high levels of ethylene gas.

So next time you are viewing a movie supposedly set in Victorian England, check out the plants in the background. If you see ferns, rubber plants, and orchids, you need to contact the movie’s Director and update her using your newly acquired botanical knowledge.

Casting Off

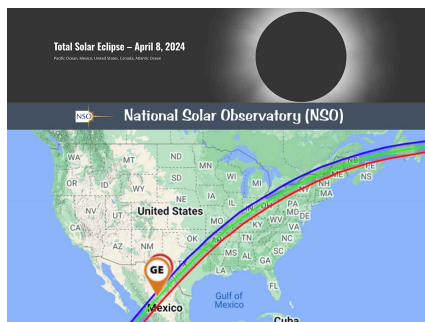
Now we get to the more immediate point -- I have decided to "cast off" one patch of my cast iron plants.

I will be having them removed and hauled off very soon. If you want a DIY project, give me a call. We can set up a time for you to grab your shovel and dig up a patch for yourself before I have them removed.

Rare Opportunity

Do You Have Your Glasses?

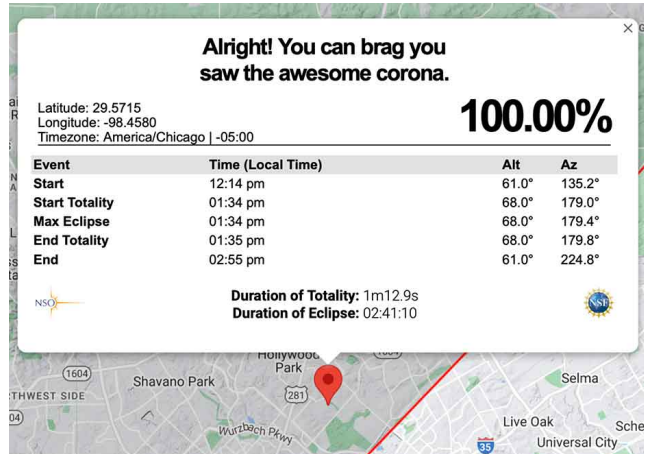
The total solar eclipse on April 8, will occur when the Moon moves between the Earth and Sun completely



obscuring the Sun. During totality, you may view the Sun without proper eye protection, such as solar glasses. But during all other phases of the eclipse, you should only look at the Sun when your eyes are protected.

1 Minute 12 Seconds of Totality

Here in the Gardens, we are fortunate to be within the edge of the totality viewing area.



<https://nso.edu/for-public/eclipse-map-2024/>

Cleaning Your Garage?



Last week, I asked the question if others are interested in scheduling their own individual garage sale before summer sets in. Two potential Saturdays have been suggested, but there are still discussions on-going. Those dates are Saturday April 27 (during Fiesta) and Saturday May 4.

So far, **nine** residents have express interest in holding their own garage sales for the same day. **Any more interest?**

email: carita@gardensofoakhollow.com

Each individual garage sale is responsible for obtain their own \$16 permit before the event. Check out this link to learn more about holding a garage sale in San Antonio.

www.sa.gov/Directory/Departments/DSD/CES/Permits-Licenses/Garage-Sales

Free Puzzles

If you read online newspapers, you may have seen links to Puzzles. Last December Hearst Newspapers purchased a new start-up, **Puzzmo.com**, and linked it to the daily Puzzle section of their newspapers.

The new site publishes eight fresh games every day, five of which are free to play.

Solving puzzles is one of the few sedentary activities in life that has been scientifically proven to make you happier and healthier. From helping to keep your memory sharp to the natural thrill of a dopamine hit that comes with cracking one, puzzling just feels good.

Paperback puzzle books are great, but being able to play them on your phone makes puzzles even more accessible.

Simply creating a free account will give you access to 5 games that refresh on a daily basis. Here is a quick look at the 5 free games.

Spell Tower

SpellTower takes the classic word search and turns it into a shifty beast that's both more creatively satisfying and more challenging to complete.

You are given a grid of letters and tasked with roping together as many words as you can—but the trick is that the letters disappear as you use them, forcing you to plan your moves ahead if you want to clear the entire board.

Flipart

Puzzmo describes Flipart as a digital jigsaw puzzle "inspired by organizing a sock drawer." The board is packed with colorful pieces reminiscent of Tetris blocks that need

Flipart

Cross|word

Really Bad Chess

Typeshift

SpellTower

Crosswords for everyone
On Puzzmo we do crosswords a little differently — friendlier, more modern, and easier to learn.

- No need to look something up! Just hit the hint button for an easier clue.
- Whats up with the [?]? Sometimes crossword answers contain multiple words, bolded lines show you where the

▼ Show more

<https://www.puzzmo.com/>

to be rotated in order for them all to fit with no overlaps. Of all the site's games, Gage says this is the ideal gateway for a puzzling novice. "It's a visual puzzle and you can get the hang of it just by clicking around," he says. "Many people don't even need to read the instructions!"

Really Bad Ches

Picture chess, but played with totally random pieces. Every day the board is set with a new selection. Knowing some chess strategy will help you crack the competitive daily leaderboard on Really Bad Chess, but you can jump right in and play even if you don't know the difference between a rook and a knight. "We show you how all of the pieces move," Gage says. "I'd never played a game of chess to completion until I built and tried Really Bad Chess for the first time."

"We show you how all of the pieces move," Gage says. "I'd never played a game of chess to completion until I built and tried Really Bad Chess for the first time."

The game's attractive, minimal interface shows the potential moves of each piece when you touch them, including those of your AI opponent, and by limiting your eligible moves to ones that will keep you alive whenever your king is in trouble. Plan to make use of the "undo" button. A lot.

Typeshift

Typeshift puzzles show you several columns of letters and tasks you with spelling words across a row until you've used every letter at least once. Unlike in SpellTower, you're able to reuse letters here, making it a bit faster paced and more forgiving.

Cross|Word

This one might look familiar. In **Cross|Word**, players are handed a new midi-sized grid each day. The voices of the **Puzzmo** game editors really shine through. The Feb. 8 puzzle, for example, included pop culture clues about La Toya Jackson, Talking Heads and clever references to "Ru Paul's Drag Race" and cassingles ("Holders of some '80s bangers").